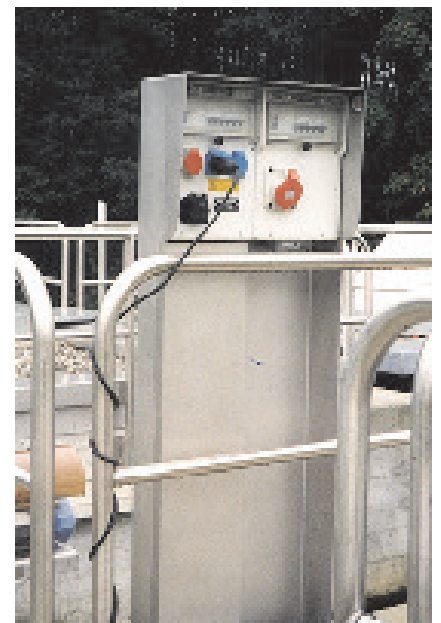
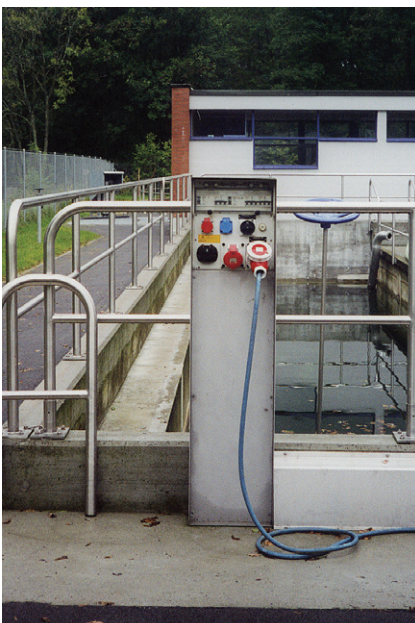


## Sewage plants: A new system which however has already proved its value

### Stainless steel construction V2A (1.4301) or V4A (1.4435)

- optimal protection against climatic influences due to the longitudinal side panels
- increased mechanical stability
- removable front plate (optimal access to the cables and cord grip)
- wiring simple and according to the given regulations
- clean and clearly arranged installation
- increased degree of protection (all cable feedings with screwed cable gland)
- possibility to adjust a transparent retractable shelter
- can easily be retrofitted (with switches and socket-outlets)
- no building of condensation water



V 1212